



Sustainability Insights

Danske Invest SICAV European Corporate Sustainable Bond

Introduction

This document offers a comprehensive overview of the sustainability features and performance of this specific fund, focusing on its alignment with binding sustainability commitments.

It provides clear and factual information on key sustainability aspects, including the fund's performance in areas such as sustainable inclusion, active ownership and exclusion practices. The data included in this report is based on already reported data from the fund's most recently available SFDR annual report.

By presenting the fund's sustainability profile, the document reflects Danske Bank's commitment to transparency and responsible investing, supporting investors in making informed decisions that align with their financial goals and sustainability preferences.





Sustainability features

Danske Invest SICAV European Corporate Sustainable Bond

What are sustainability features?

This fund is guided by binding sustainability commitments, which are defined in its investment strategy and legal documentation. These commitments ensure that specific sustainability principles and criteria are consistently applied throughout the investment process. They may include obligations to include defined sustainability features, exclude certain types of investments, and engage in active ownership activities such as engagement and voting. By adhering to these binding commitments, the fund ensures accountability and transparency in its approach to sustainability.

 Sustainable investments	Yes	No	>80%		
 Inclusions	Sound sustainability practices		Sound environmental stewardship		
 Exclusions	Sustainability risk	Fossil fuel transition laggards	Controversial weapons	Pornography	Enhanced sustainability standards
	SPU	Thermal coal mining	Tar sands	Tobacco	Peat-fired power generation
	Alcohol	CTB	Fossil fuels	Commercial gambling	Military equipment
	PAB	PAI	Extended enhanced sustainability standards		
 Active ownership	Engagements		Voting		
 SFDR Article	Article 6	Article 8	Article 9		
	Applied criteria	Not applied criteria			





Sustainable investments

Danske Invest SICAV European Corporate Sustainable Bond

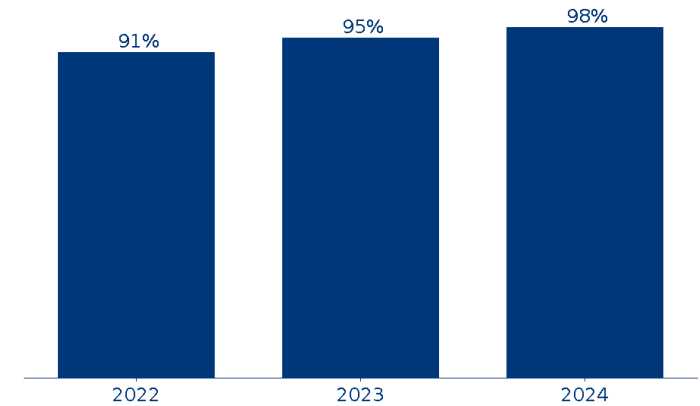
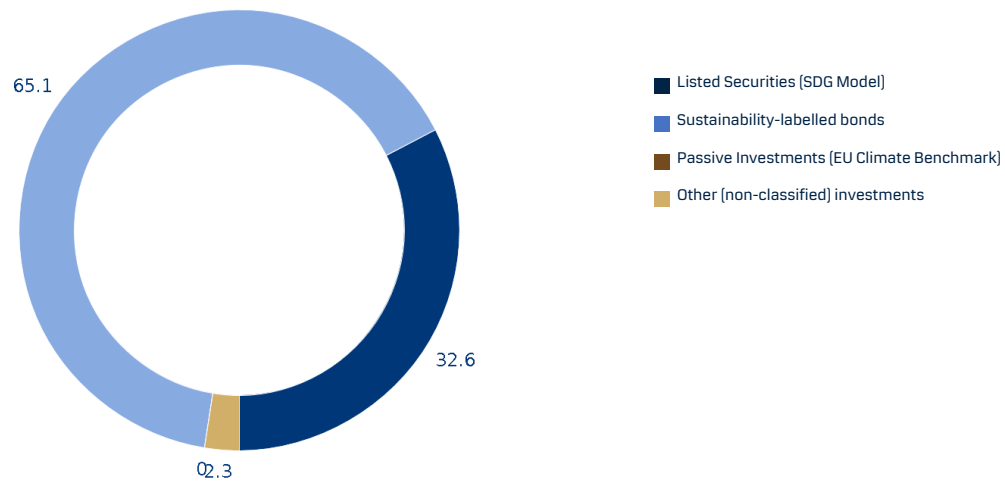
What is a sustainable investment?

A sustainable investment is an investment in an economic activity that contributes to an environmental or social objective, provided it does not significantly harm other environmental or social objectives and that the investee companies follow good governance practices. Exposure to sustainable investments can be achieved through various asset classes and investment approaches.

Sustainable investments
% of portfolio

98%

Sustainable investments development





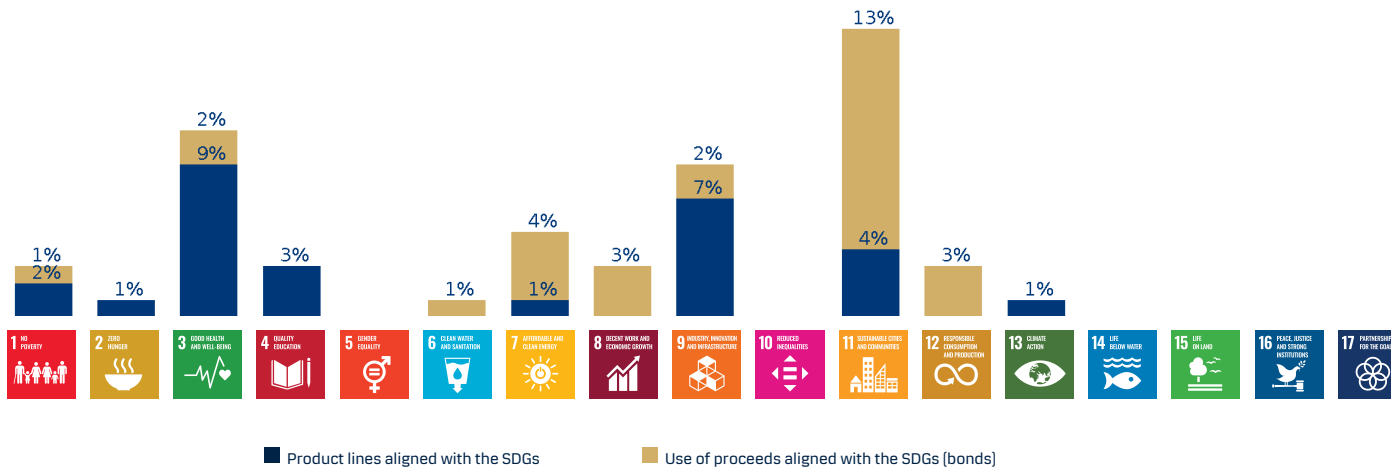
Sustainable investments – Sustainable Development Goal (SDG) contribution

Danske Invest SICAV European Corporate Sustainable Bond

What is a sustainable investment with SDG contribution?

An investment can be deemed a sustainable investment through having material “SDG contribution“. Danske Bank’s model evaluates companies based on revenue derived from SDG-aligned product lines or, in the case of bonds, the allocation of proceeds to projects or activities that support SDG objectives. Investments are classified as sustainable if they meet specific thresholds and criteria.

Portfolio SDG contribution



Examples of products and services, as well as use of proceeds from bonds, that we have classified as having a positive contribution to one or more of the SDGs.

- Air filtration equipment
- Allergies management
- Asthma therapeutics
- Building insulation
- Bus transportation services
- Carbon capture services
- Class I railroads
- Depression therapeutics
- Diabetes drugs
- Disability insurance
- Educational services
- Electric vehicles
- Electrical infrastructure
- Electronic waste services
- Garbage collection services
- Job websites
- Metal recycling
- Photovoltaic and solar cells
- Security and safety equipment
- Surgical robotic systems
- Veterinary services
- Waste management services
- Water filtration equipment
- Water utilities
- Wind energy products

The figures are based on the 2024 SFDR report.

Inclusion – sound sustainability practices

Danske Invest SICAV European Corporate Sustainable Bond

What is inclusion of sound sustainability practices?

The inclusion of “sound sustainability practices” is measured through the weighted ESG score of the portfolio, based on an internally developed scoring model. It aims to reduce exposure to companies with prominent sustainability risk. The product’s weighted average mScore must exceed 50.

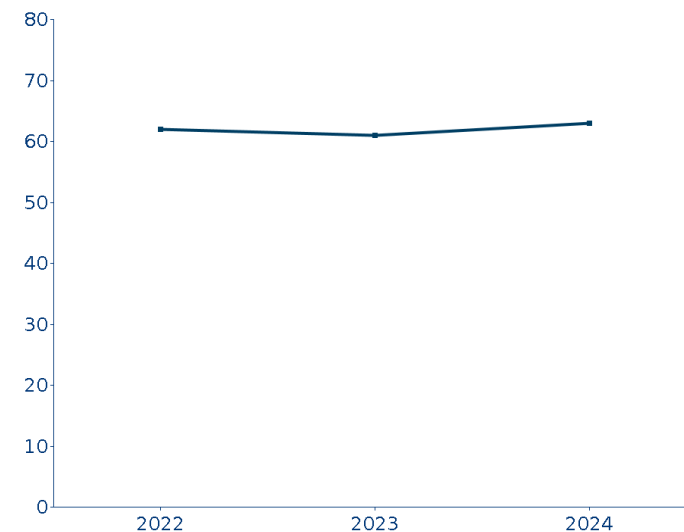
mScore scale



Portfolio mScore

63
Outperformer

Portfolio development



mScore

By combining insights from multiple third-party ESG research providers, the mScore delivers a balanced sustainability risk assessment. The mScore focuses on two key components:

- **Financial materiality:** It identifies ESG factors that are most significant to financial outcomes.
- **Sector specific:** Leveraging reliable research from SASB, the mScore uses tailored sector data.

Inclusion – sound environmental stewardship

Danske Invest SICAV European Corporate Sustainable Bond

What is sound environmental stewardship?

The product promotes sound environmental stewardship by encouraging responsible management of environmental risks. The inclusion of "sound environmental stewardship" is measured through the carbon risk rating score of the portfolio, based on a rating score sourced from ISS ESG. The product's weighted average carbon risk rating must exceed 50.

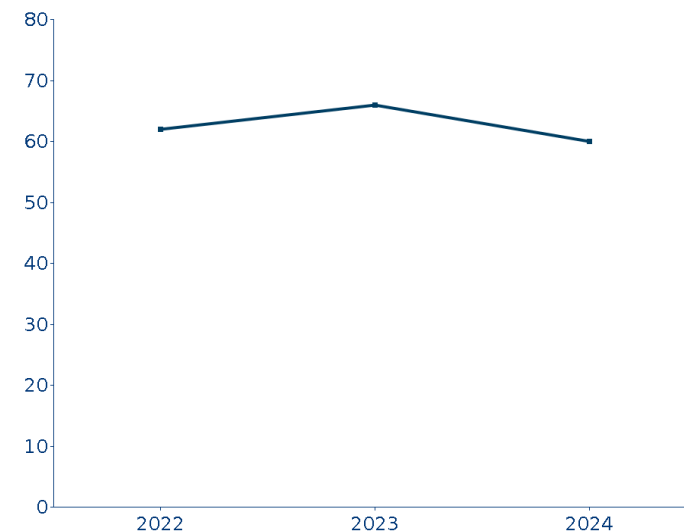
Carbon Risk Rating scale



Portfolio Carbon Risk Rating score

60
Outperformer

Development



Carbon Risk Rating

The Carbon Risk Rating is a forward-looking assessment that helps determine how effectively the portfolio's investments manage carbon-related risks to remain sustainable and competitive. It is based on two key parts:

- **Carbon risk classification:** Measures a company's climate risks based on its industry and business activities.
- **Carbon performance score:** Evaluates a company's current carbon performance, its ability to manage future climate risks, and its readiness to take advantage of climate-related opportunities.

Exclusions

Danske Invest SICAV European Corporate Sustainable Bond

What are exclusions?

The product applies exclusions on certain criteria. Exclusions are applied to minimize risks and reduce negative impacts linked to specific investments.

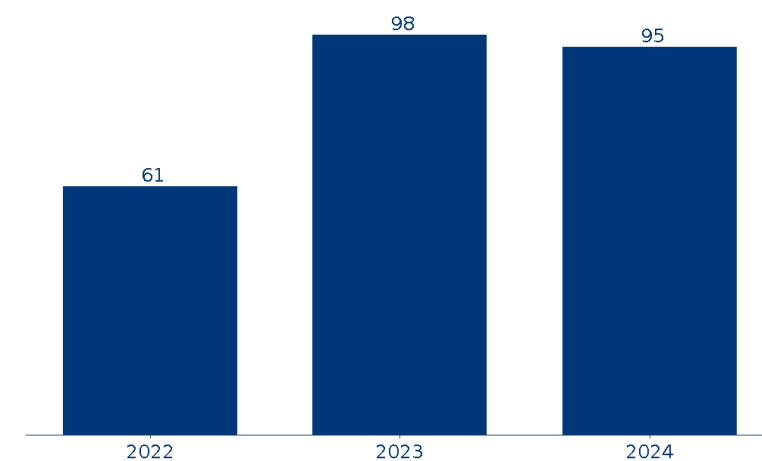
Applicable exclusion criteria

Sustainability risk	Fossil fuel transition laggards	Controversial weapons	Pornography	Enhanced sustainability standards
SPU	Thermal coal mining	Tar sands	Tobacco	Peat-fired power generation
Alcohol	CTB	Fossil fuels	Commercial gambling	Military equipment
PAB	PAI	Extended enhanced sustainability standards		

Excluded

Not excluded

Number of excluded companies in benchmark



Active Ownership – engagements

Danske Invest SICAV European Corporate Sustainable Bond

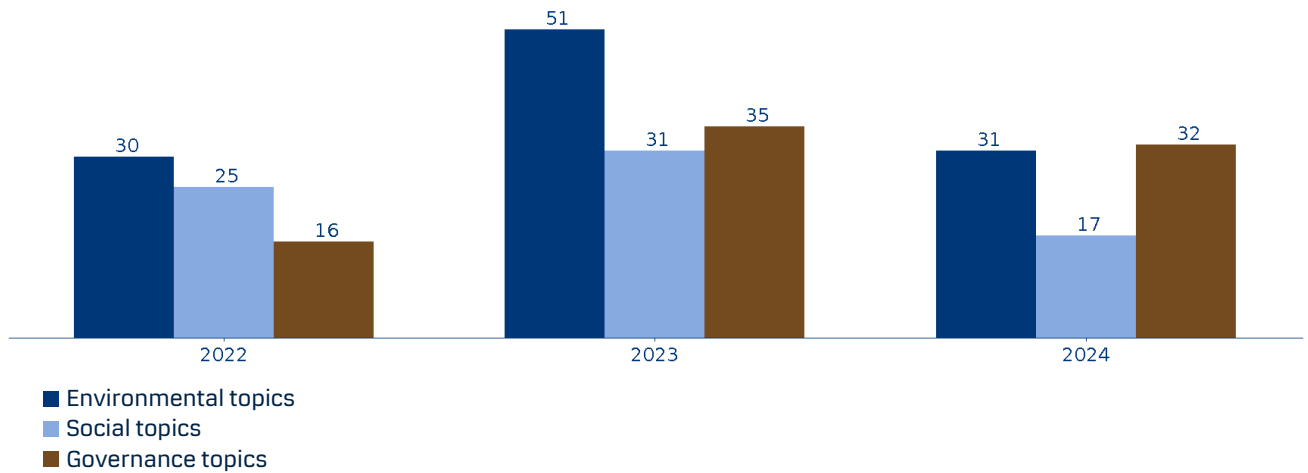


What is active ownership?

The product uses active ownership as a measure to protect the value of our customers' investments and to manage the Principal Adverse Impact of the investments. In this product it is done through engagement with the companies we invest in.

Engagements

Danske Bank engages with issuers on financial, sustainability or other material topics. This is done to seek information or encourage better sustainability practices.



EU Taxonomy

Danske Invest SICAV European Corporate Sustainable Bond

What is the EU Taxonomy?

The EU taxonomy is a classification system that defines which economic activities are environmentally sustainable. It supports investments in activities that align with the EU's goal of net zero emissions by 2050 and other environmental goals.

Revenue: Total income generated from sales of products or services.

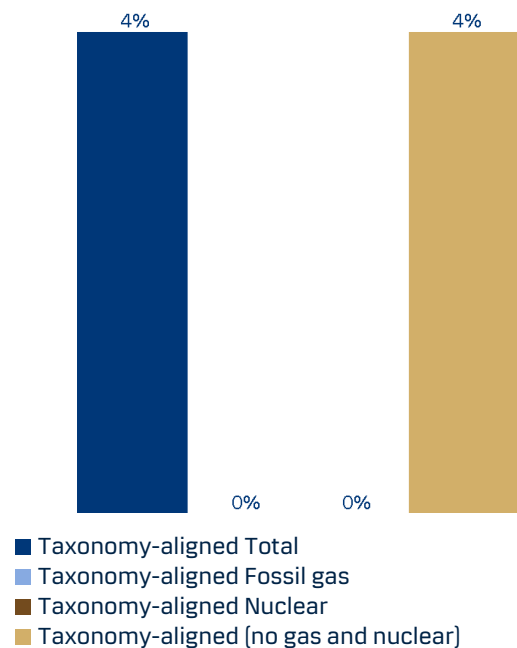
Capital Expenditures (CapEx): Long-term investments in assets like buildings, machinery or technology.

Operational Expenditures (OpEx): Daily costs to run the business, like raw materials, utilities or maintenance and repairs.

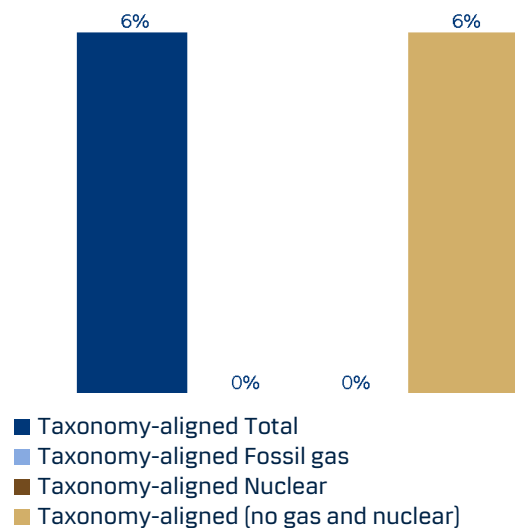
EU Taxonomy-aligned revenue
% of portfolio

4%

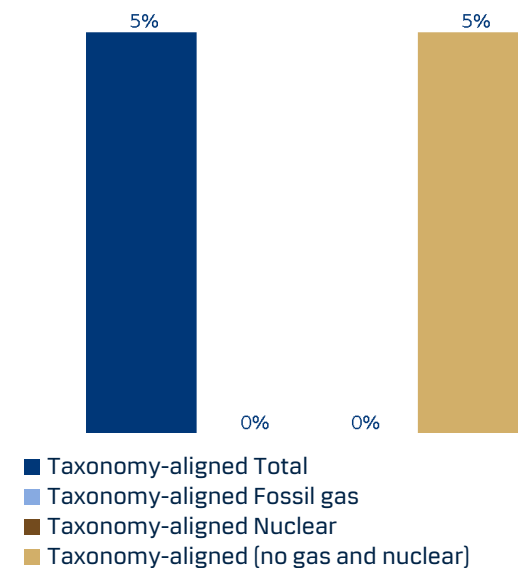
Revenue



Capital Expenditures (CapEx)



Operational Expenditures (OpEx)



More information

Danske Invest SICAV European Corporate Sustainable Bond

For more information, please visit Danske Bank's website or use the links below:

Fund-specific information

- **SFDR website disclosure**
https://www.danskeinvest.fi/docs/SFDR_WDISCL_LU9867_en.pdf

General information

- **Sustainability related disclosure**
https://www.danskeinvest.com/page/responsible_investments_insight
- **Overall approach**
https://www.danskeinvest.com/docs/didken_responsible_investment_policy_dima.pdf
- **Sustainable investments**
<https://danskebank.com/-/media/danske-bank-com/file-cloud/2022/12/danske-bank-sustainable-investment-houseview-and-sdg-model.pdf>
- **Inclusion – Carbon Risk Rating and sustainability risk (mScore)**
<https://danskebank.com/-/media/danske-bank-com/file-cloud/2023/7/inclusion-instruction.pdf>
- **Exclusions**
<https://danskebank.com/-/media/danske-bank-com/file-cloud/2022/12/exclusion-instruction.pdf>
- **Active ownership – engagements and voting**
<https://danskebank.com/-/media/danske-bank-com/file-cloud/2022/9/active-ownership-instruction.pdf>
- **Sustainability risk integration**
<https://danskebank.com/-/media/danske-bank-com/file-cloud/2022/12/sustainability-risk-integration-instruction.pdf>
- **Educational videos xUnlocked**
<https://sustainabilityunlocked.com/home>



Disclaimer

Danske Invest SICAV European Corporate Sustainable Bond

This publication has been prepared as marketing communication and does not constitute investment advice.

The information and figures in this publication are based on the previous year's SFDR Annual Report for the fund; therefore, any potential changes made after the end of the previous year will not be reflected in this publication.

Please consult with your professional advisors about the legal, tax, financial, or other matters relevant to the suitability and appropriateness of an investment to ensure that you understand its risks. Please refer to the prospectus and the Key Information Document before making any final investment decision. A summary of investor rights in English, as well as more information on the sustainability aspects of the fund, can be obtained on the Danske Invest Fund Management Ltd website.

Danske Invest Management A/S may decide to terminate the arrangements made for the marketing of its funds

